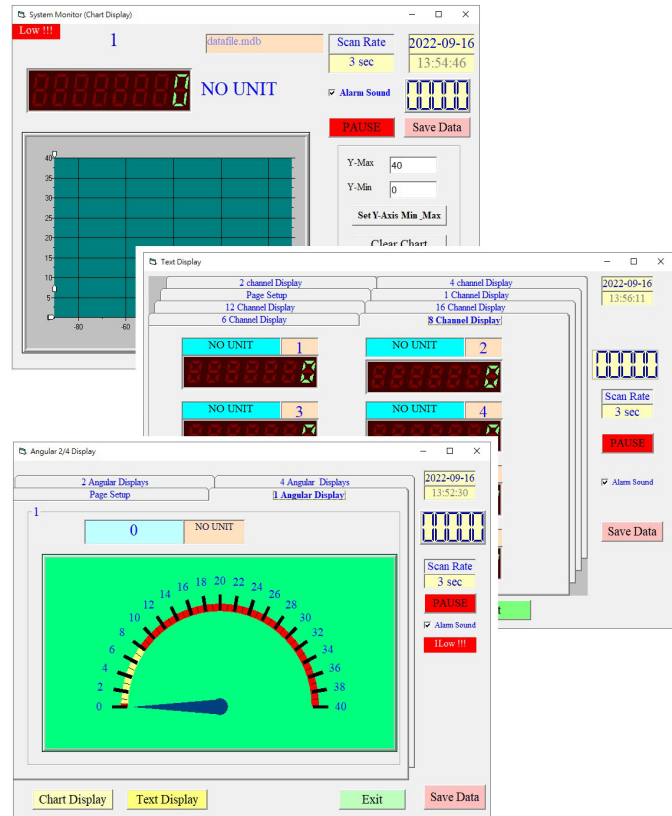


Multi-Displays

DATA ACQUISITION SOFTWARE

Model : SW-U801-WIN

ISO-9001, CE, IEC1010



FEATURES

The SW-U801-WIN is a multi-displays (1/2/4/6/8 displays) powerful WINDOWS program available for WIN 95 & WIN 98, which enables you to cooperate the LUTRON's instruments. It also provides the functions of data logging system, text display, angular display, chart display, data recorder high/low limit, data query, text report, chart report.. .xxx.mdb, xxx.txt data file can be retrieved for EXCELL, ACCESS., wide intelligent applications.



LUTRON ELECTRONIC

The Art of Measurement

MULTI-DISPLAYS DATA ACQUISITION SOFTWARE

Model : SW-U801-WIN

INTRODUCTION

The SW-U801-WIN is a multi-displays (1/2/4/6/8 displays) powerful WINDOWS program available for WIN 95 & WIN 98, which enables you to cooperate the LUTRON's instruments. It also provides the functions of data logging system, text display, angular display, chart display, data recorder high/low limit, data query, text report, chart report.. .xxx.mdb data file can be retrieved for EXCELL, ACCESS., wide intelligent applications.

1. The saved xxx.mdb data file can be retrieved for EXCELL, ACCESS...
2. When execute the " Print data " function, will generate the xxx.txt file.

GENERAL SPECIFICATIONS

System Requirement	Computer with following operating system : Win 98 Win 2000 XP Monitor : VGA, EGA monitor
Function	Data recorder, text display, analog display, chart display, high/low limit, data query, text report, chart report.
Common Port	Select COM 1 to COM 8.
Display select	1 display, 2 displays, 4 displays, 6 displays, 8 displays.
Data Record	Auto or Manual
Sample Rate	2 to 3,600 seconds.
Data Save Structure	Data file : XXX.mdb. * Automatic save to disk. Data file : XXX.txt. * When execute the " Print data " function, will generate the xxx.text file.
Accessories Included	CD disk..... 1 PC. Operation manual..... 1 PC.
Optional Cables	RS232 cable, Model : UPCB-01 Direct RS232 cable be used to connect the meter to the computer (COM port). RS232 cable, Model : UPCB-02 Isolated RS232 cable be used to connect the meter to the computer (COM port). USB cable, Model : USB-01 USB interface cable be used to connect the meter to the computer (USB port). RS232 cable, Model : UPCB-04 * UPCB-04 is the double D9 RS232 cable. * Available for FG-5000A-232, FG-20KG-232.