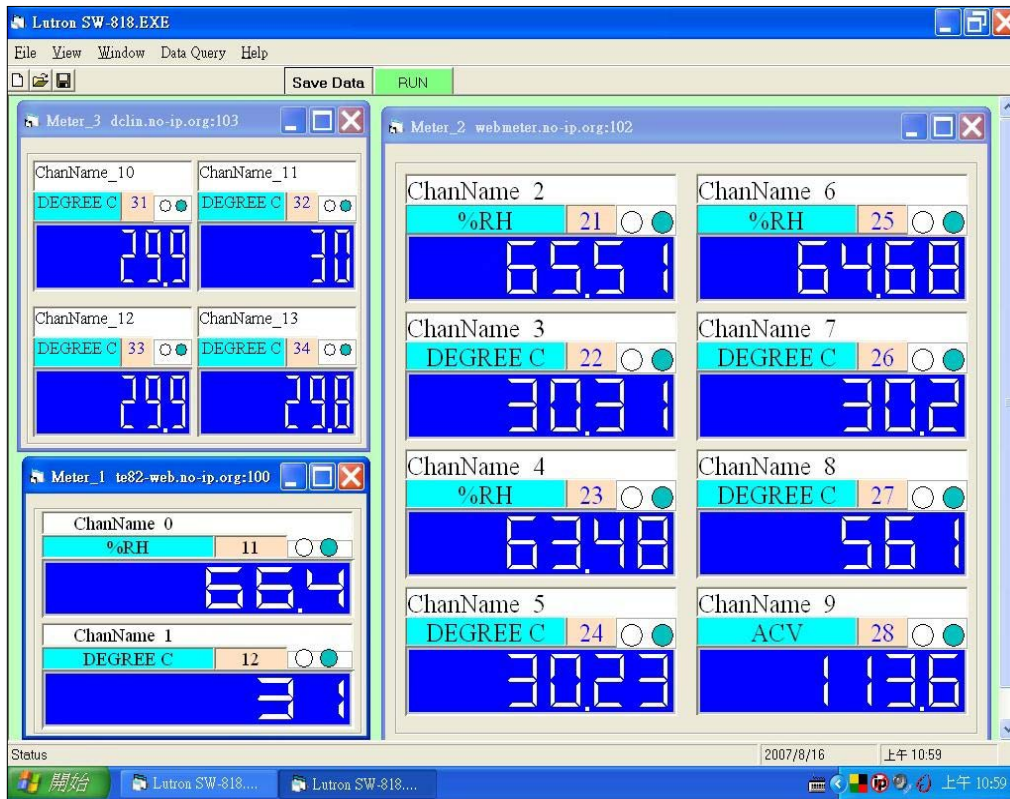


8 meters/96 channels

# NETWORK DATA ACQUISITION SOFTWARE

Model : SW-818

ISO-9001, CE, IEC1010



LUTRON ELECTRONIC

*The Art of Measurement*

*8 meters/96 channels*

## **NET WORK DATA ACQUISITION SOFTWARE**

**Model : SW-818**

### **INTRODUCTION**

- \* When LUTRON meter with RS232 interface is connected to RSW-923 converter, Its data can be shared via WiFi technology directly. Therefore, if PC (desktop, laptop) install the SW-818, it can be read the measuring data via WiFi from those meters.
- \* Maximum 8 meters and 12 channels monitoring at the same time let you can get a complete data information.
- \* High, Low warning to monitor any unusually situation.
- \* Sample rate setting from 2 to 3600 seconds to satisfy your different demands.
- \* .xxx.mdb data file can be retrieved by EXCEL, ACCESS., and other kinds of database software. Data analyze and demonstrate easily.

### **GENERAL SPECIFICATIONS**

System Requirement	Computer with following operating system : 1.Win 98 2.Win XP 3.Vista 4.Win 7 Monitor : VGA, EGA monitor
Basic entry parameter	1.IP Address, 2.Port, 3.Total Meter No., 4.Channel No., 5.Sample Rate, 6.Project Name, 7.Log File Name
Data Record	Auto or Manual
Sample Rate	1 to 3,600 seconds.
Data Save	Data file : XXX.mdb.* Automatic save to disk. Data file: XXX.xls * When recording data after the implementation of the Data query function screen appears, and then perform Export Data To Excel function, will produce XXX.xls file
Accessories Included	CD disk..... 1 PC. Operation manual..... 1 PC.

\* Appearance and specifications listed in this brochure are subject to change without notice.

1811-SW818